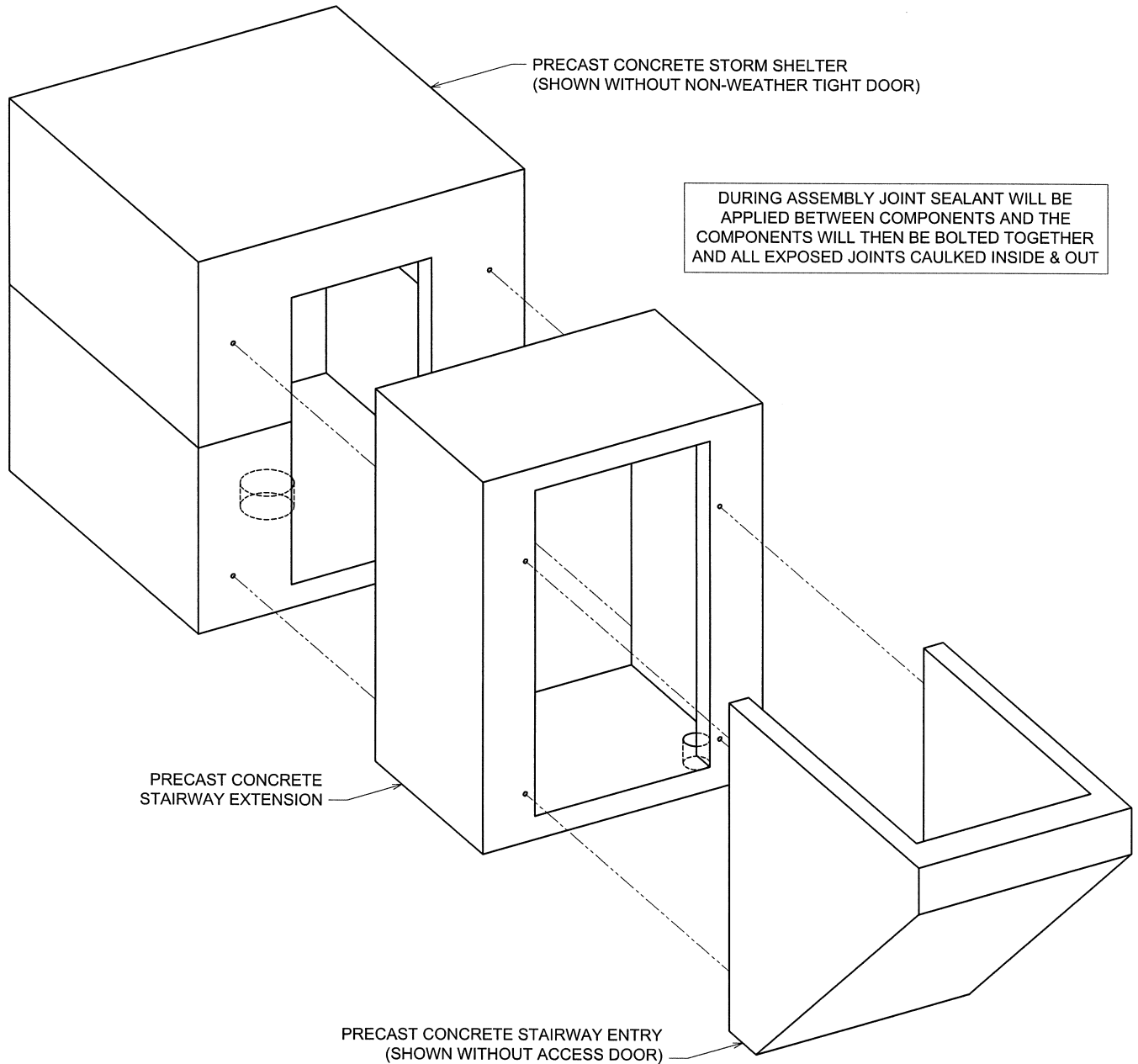


PRECAST CONCRETE

# STORM SHELTER

## EXPLODED VIEW OF BELOW GROUND (BG) STORM SHELTER, STAIRWAY EXTENSION & STAIRWAY ENTRY



DURING ASSEMBLY JOINT SEALANT WILL BE APPLIED BETWEEN COMPONENTS AND THE COMPONENTS WILL THEN BE BOLTED TOGETHER AND ALL EXPOSED JOINTS CAULKED INSIDE & OUT

ALL BELOW GROUND STORM SHELTER COMPONENTS ARE PROVIDED WITH SUMP DRAIN HOLE (SHOWN IN HIDDEN LINES ABOVE) AGGREGATE BASIN TO FACILITATE DRAINAGE TO BE PLACED BELOW EACH COMPONENT'S SUMP LOCATION PRIOR TO SETTING THEM INTO THEIR READY EXCAVATIONS

**vaughn**  
**concrete products, inc.**

SS-EXTENSION-ENTRY ASSY.DWG  
DATE CREATED: 5/07  
UPDATED: -----