

EAST JORDAN
IRON WORKS, INC.
P.O. BOX 439
EAST JORDAN, MI. 49727
1-800-874-4100
FAX 231-536-4458

| | |
|----------|----------|
| DRAWN | DATE |
| SBB | 10/25/01 |
| APPROVED | DATE |

2040Z MANHOLE
FRAME

PRODUCT NO.
204011

CATALOG NO.
2040Z

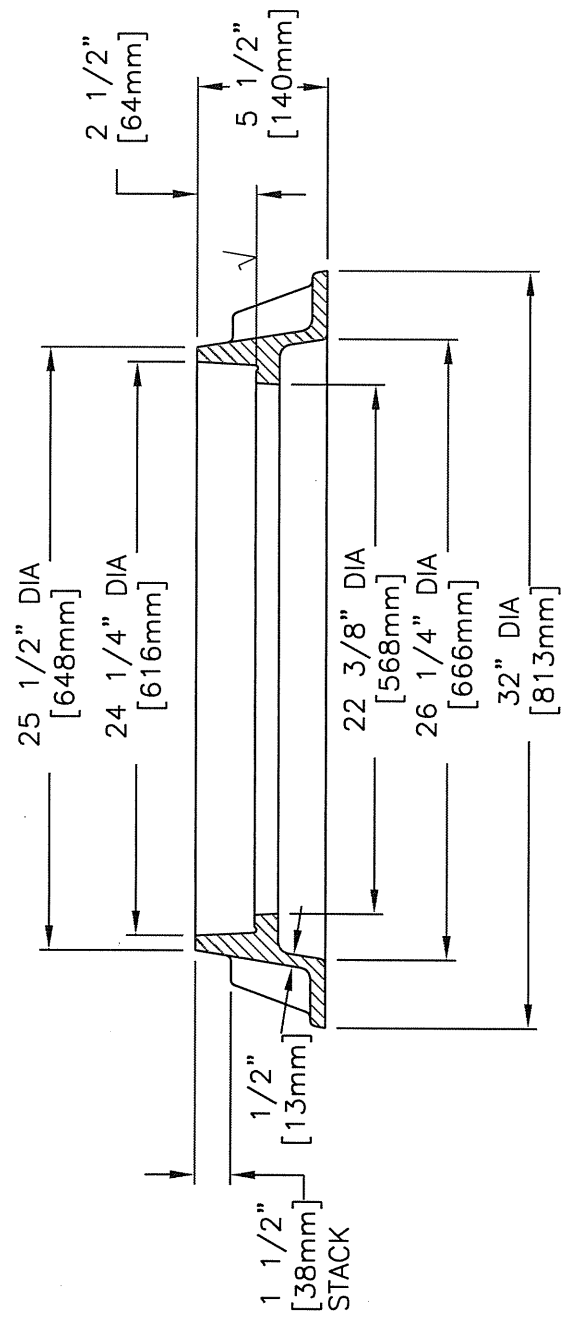
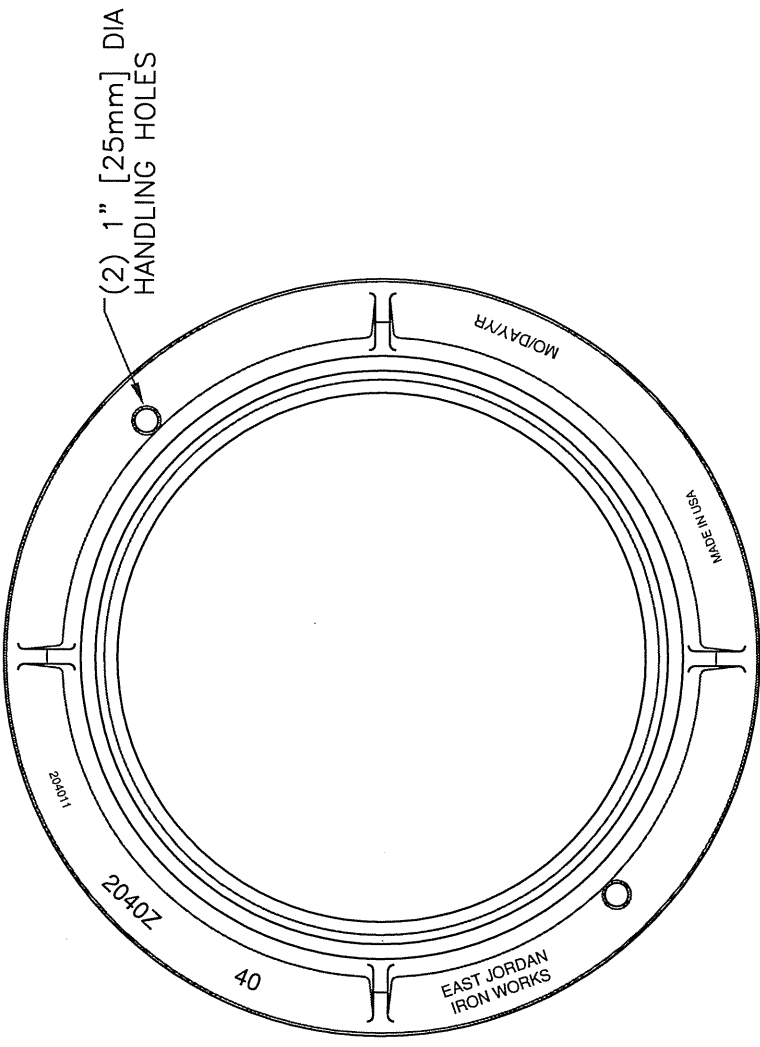
REF. PRODUCT DRAWING
204011

EST. WT.
FRAME: 140 LBS 64kg

OPEN AREA
N/A

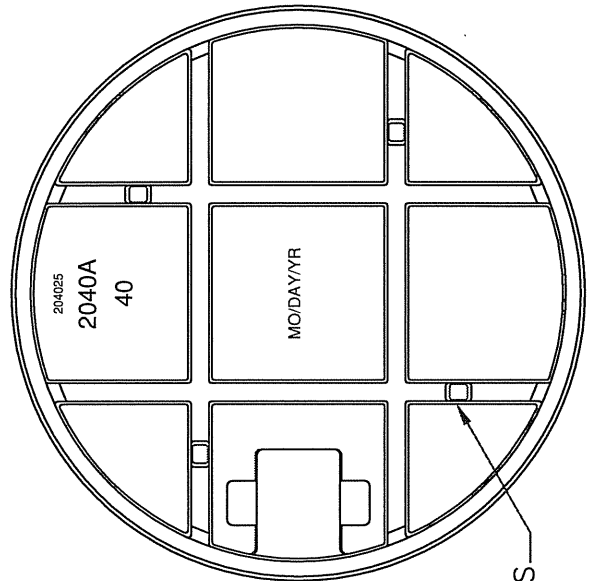
MAT'L SPEC.
FRAME - GRAY IRON
ASTM A48 CL35

LOAD RATING
HEAVY DUTY
MEETS OR EXCEEDS AASHTO HS-20-44
LOADING REQUIREMENTS

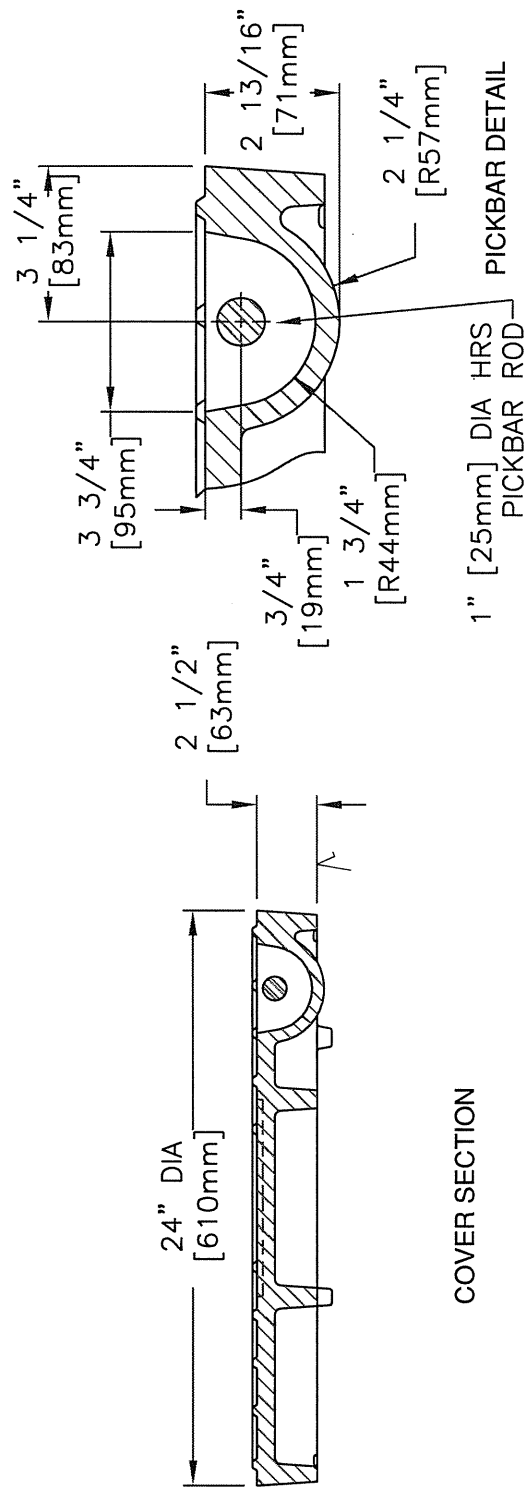
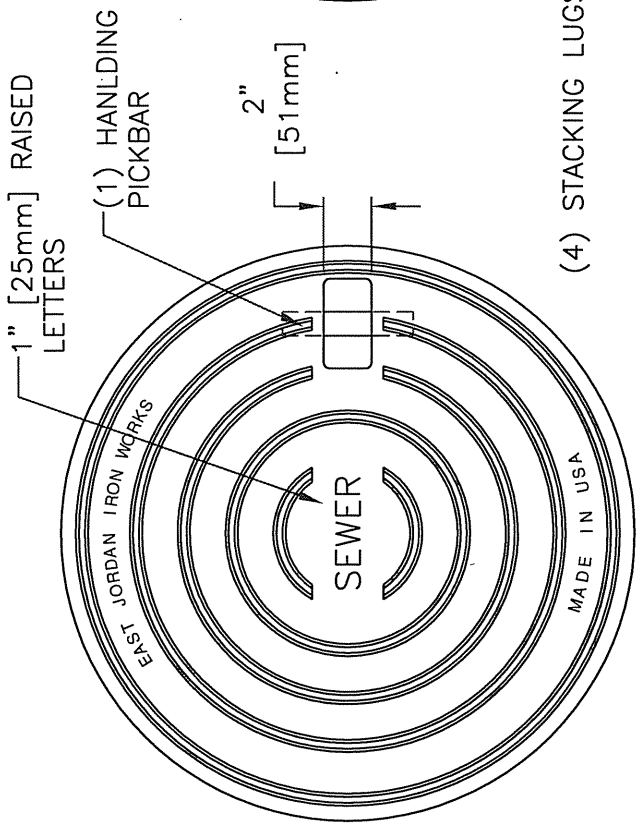


✓ MACHINED SURFACE

| | | |
|---|---------------------|------------------|
| EAST JORDAN IRON WORKS, INC. P.O. BOX 439 EAST JORDAN, MI. 49727 1-800-874-4100 FAX 231-536-4458 | | DATE 07/17/02 |
| DRAWN TCL | DATE 07/17/02 | |
| APPROVED | DATE | |
| MANHOLE COVER | | |
| PRODUCT NO. | 00204025 | |
| CATALOG NO. | 2040A | |
| REF. PRODUCT DRAWING | 204021 | |
| EST. WT. | COVER: 150 LBS 68kg | |
| OPEN AREA | N/A | |
| MAT'L SPEC. COVER - GRAY IRON ASTM A48 CL35 | | |
| LOAD RATING HEAVY DUTY MEETS OR EXCEEDS AASHTO HS-20-44 LOADING REQUIREMENTS | | |



BOTTOM VIEW
OF COVER



✓ MACHINED SURFACE