

# PRECAST CONCRETE STANDARD MANHOLE

MANUFACTURED TO ASTM C-478

## MANHOLE PRICING:

### ECCENTRIC CONE

(IF ORDERED SEPARATELY)

FOR 48" I.D. MANHOLE:

24" TALL - \$140.00 EACH

32" TALL - \$210.00 EACH

36" TALL - \$210.00 EACH

FOR 60" I.D. MANHOLE:

36" TALL - \$275.00 EACH

FOR 72" I.D. MANHOLE:

36" TALL - \$480.00 EACH

### CAST IRON RING & COVER

STANDARD 24" DIAMETER X 4" TALL - \$200.00 EACH

STANDARD 24" DIAMETER X 8" TALL - \$328.00 EACH

### 24" I.D. MANHOLE RISERS

2" TALL -- \$27.00 EACH; 3", 4" OR 6" TALL - \$35.00 EACH; 8" OR 12" TALL - \$47.00 EACH

### TRAFFIC LID (FLAT TOP)

(PROVIDED WITH TONGUE & GROOVE)

FOR 48" I.D. MANHOLE - \$176.00 EACH

FOR 60" I.D. MANHOLE - \$270.00 EACH

FOR 72" I.D. MANHOLE - \$320.00 EACH

FOR 90" I.D. MANHOLE - 8" THICK \$950.00 EA.; 12" THICK \$1,100.00 EA.

### PRICE PER VERTICAL FOOT

(PROVIDED WITH STEPS & SEALANT\*\*)

FOR 48" I.D. MANHOLE - \$64.00/FT.

FOR 60" I.D. MANHOLE - \$90.00/FT.

FOR 72" I.D. MANHOLE - \$150.00/FT.

FOR 90" I.D. MANHOLE - \$310.00/FT.

(\*\*INCLUDES 1 ROW JOINT SEALANT/JOINT OF MANHOLE USING TALL SECTIONS OR ADDITIONAL SEALANT IS REQUIRED @ \$10.00/ROLL; 14.5FT./ROLL)

### PIPING BLOCKOUTS

PIPE SIZE(S)	BLOCKOUT	BLOCKOUT WITH PRESS-IN GASKET
2", 4", 6" OR 8"	\$25.00 EACH	\$60.00 EACH
10"	\$25.00 EACH	\$70.00 EACH
12"	\$25.00 EACH	\$75.00 EACH

### STANDARD PRECAST BASES\*\*

(USUALLY MONOLITHIC WITH FIRST RISER)

FOR 48" I.D. MANHOLE - 70" DIAMETER X 6" THICK -- \$176.00 EACH

FOR 60" I.D. MANHOLE - 84" DIAMETER X 8" THICK -- \$270.00 EACH

FOR 72" I.D. MANHOLE - 96" DIAMETER X 8" THICK -- \$320.00 EACH

FOR 90" I.D. MANHOLE - 110" DIAMETER X 8" THICK -- \$1,050.00 EACH

FOR 90" I.D. MANHOLE - 110" DIAMETER X 12" THICK -- \$1,100.00 EACH

\*\*OTHER BASE THICKNESSES AVAILABLE BY SPECIAL ORDER

### PRECAST GROUT INVERTS FOR 48" I.D. MANHOLES

# OF PIPES	PIPE SIZE		
	4", 6" OR 8"	10"	12"
1 OR 2	\$127.00	\$160.00	\$182.00
3	\$138.00	\$182.00	\$204.00
4	\$149.00	\$204.00	\$226.00

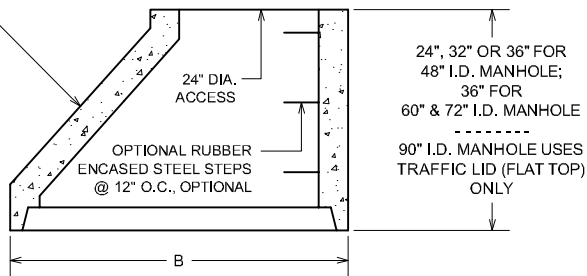
FOR 60" I.D. MANHOLES; ADD \$22.00/PRICE -- FOR 72" I.D. MANHOLES; ADD \$44.00/PRICE (INVERTS PROVIDED TO 1/2 THE HEIGHT OF THE PIPING USED)

### NOTES:

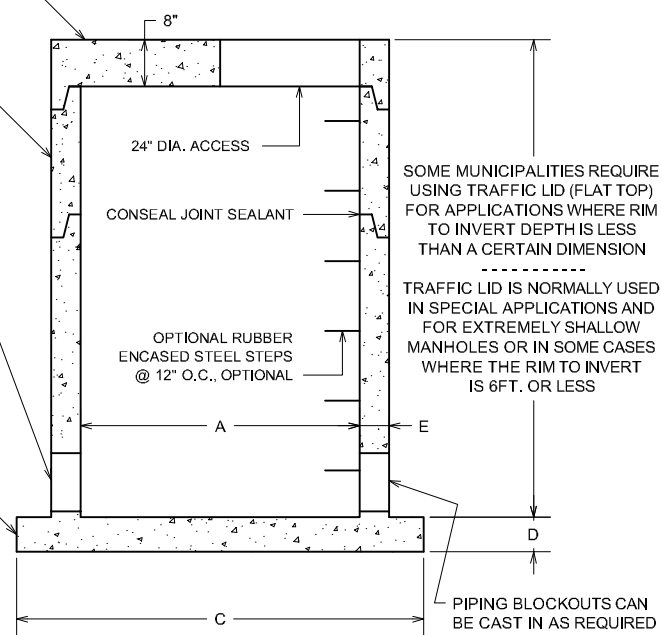
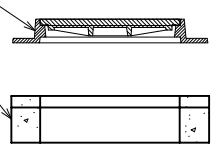
- ADDITIONAL COST FOR DELIVERY

- SEE WEIGHT & CAPACITY CHART FOR PRODUCT WEIGHTS

ACTUAL DIMENSIONS OF CONCRETE PRODUCTS MAY VARY SLIGHTLY



ALL PRICES SUBJECT TO CHANGE WITHOUT NOTICE



MANHOLE DIMENSIONS				
A	B	C	D	E
INSIDE DIAMETER	OUTSIDE DIAMETER	BASE DIAMETER	BASE THICKNESS	WALL THICKNESS
48"	58"	70"	6"	5"
60"	72"	84"	8"	6"
72"	84"	96"	8"	6"
90"	106"	110"	8" OR 12"	8"

ALL PRICES SUBJECT TO CHANGE WITHOUT NOTICE

DRAWING NOT TO SCALE

STANDARD MANHOLE PRICING-COMPLI.MTG  
DATE CREATED: 11/ 03  
UPDATED: 12/ 08



12650 Tucson Street • Henderson, Colorado 80640 • 303-659-3747, Fax 303-659-1333  
2671 South Greeley Hwy • Cheyenne, Wyoming 82007 • 307-634-0695, Fax 307-634-0694  
10021 Amarillo Blvd East • Amarillo, Texas 79108 • 806-374-3747, Fax 806-335-3717