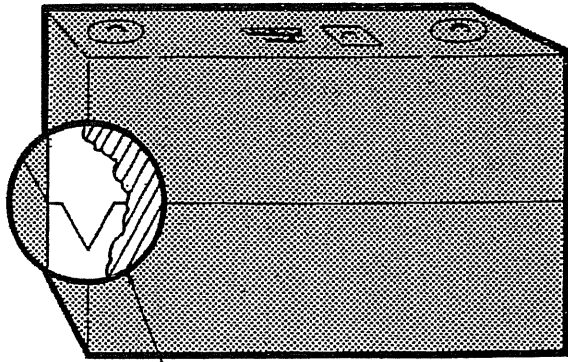
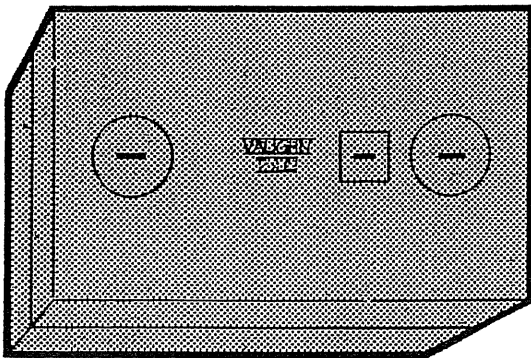


Precast Concrete
SEPTIC TANKS

Two Piece



Top Section Vees Into Bottom



Precast Concrete two-piece Septic Tank with 4" thick floor, 4" thick walls & 5" thick top. The tank side walls and floor are reinforced with 6x6x10 welded steel wire mesh with a 6" overlap. Top reinforced with 6x6x10 mesh. *Top for traffic is 9" thick.*

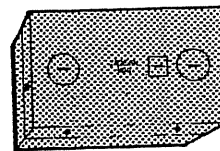
All tanks meet state and county health department requirements.

Manufactured with 4000 P.S.I. Concrete (minimum)

Sealed with Concrete Joint Sealant

To aid installation, inlets and outlets are available on sides and ends of tank.

Sizes: 1000 gallon
 1250 gallon
 1500 gallon
 2000 gallon



Two-Piece Septic Tank Weights

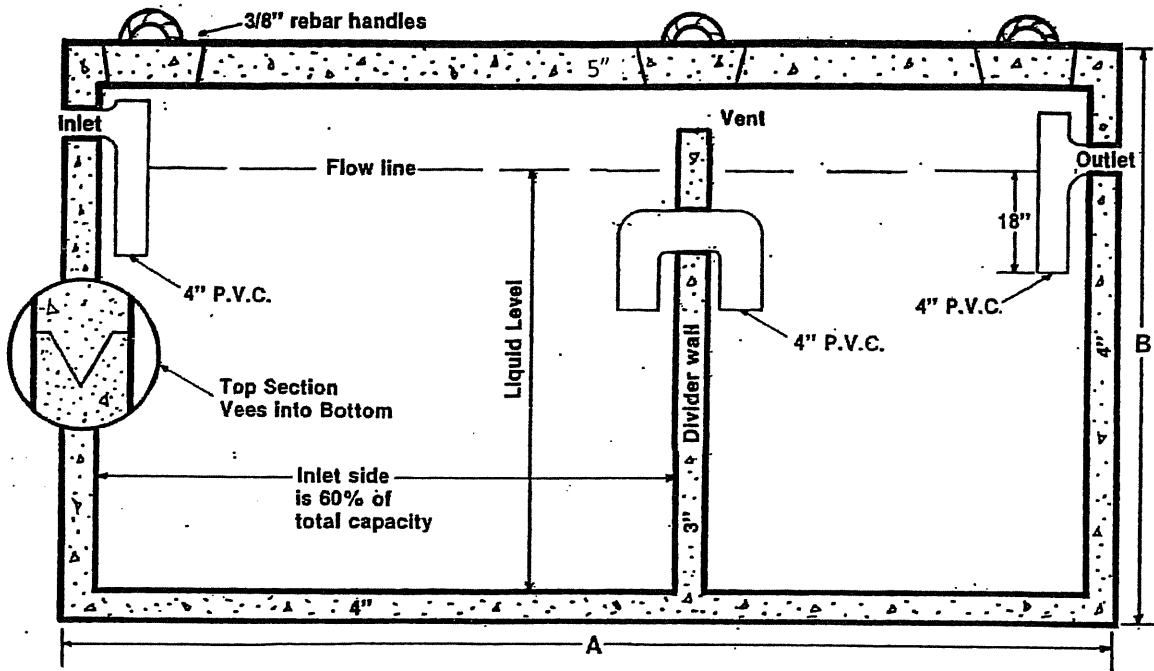
<u>Capacity</u>	<u>Non-Traffic</u>	<u>Traffic</u>
1000 Gallon	~9,440 Lbs.	N/A
1250 Gallon	~12,900 Lbs.	~15,200 Lbs.
1500 Gallon	~14,300 Lbs.	~17,100 Lbs.
2000 Gallon	~16,600 Lbs.	~19,400 Lbs.

vaughn
concrete products, inc.

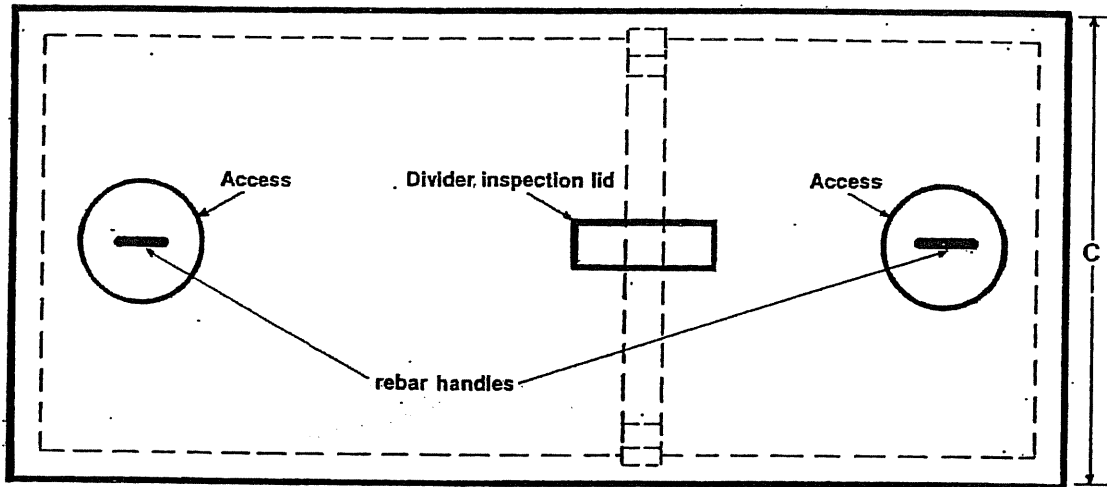
UPDATED 12/09

2671 So. Greeley Hwy • Cheyenne, Wyoming 82007 • 307-634-0695, Fax 307-634-0694

TWO PIECE SEPTIC TANK Continued



SECTION
Side View



PLAN
Top View

Tank Dimensions:	A	B	C	Digging specifications:	
1,000 gallon tank	7'10"	5'8"	5'8"	54 inches below inlet	6 1/2 ft. x 10ft
1,250 gallon tank	8'10"	5'8"	5'8"	54 inches below inlet	6 1/2 ft. x 12 ft.
1,500 gallon tank	10'6"	5'8"	5'8"	58 inches below inlet	6 1/2 ft. x 14 ft.
2,000 gallon tank	10'6"	7'2"	5'8"	76 inches below inlet	6 1/2 ft. x 14 ft.

Actual dimensions of concrete products may vary slightly