

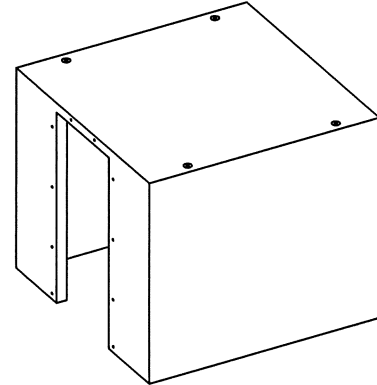
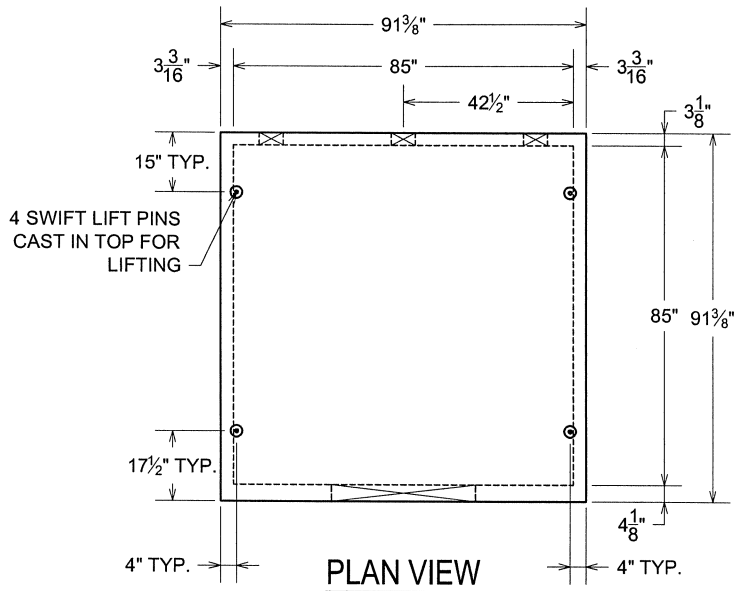
PRECAST CONCRETE ABOVE GROUND (AG)

STORM SHELTER

LOCALLY MANUFACTURED, PRECAST CONCRETE SHELTER WITH STEEL DOOR,
BOTH CERTIFIED TO MEET NSSA STANDARD

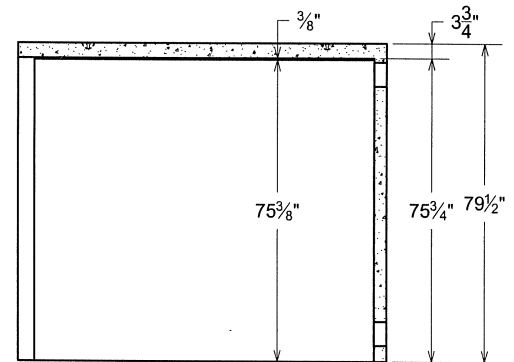
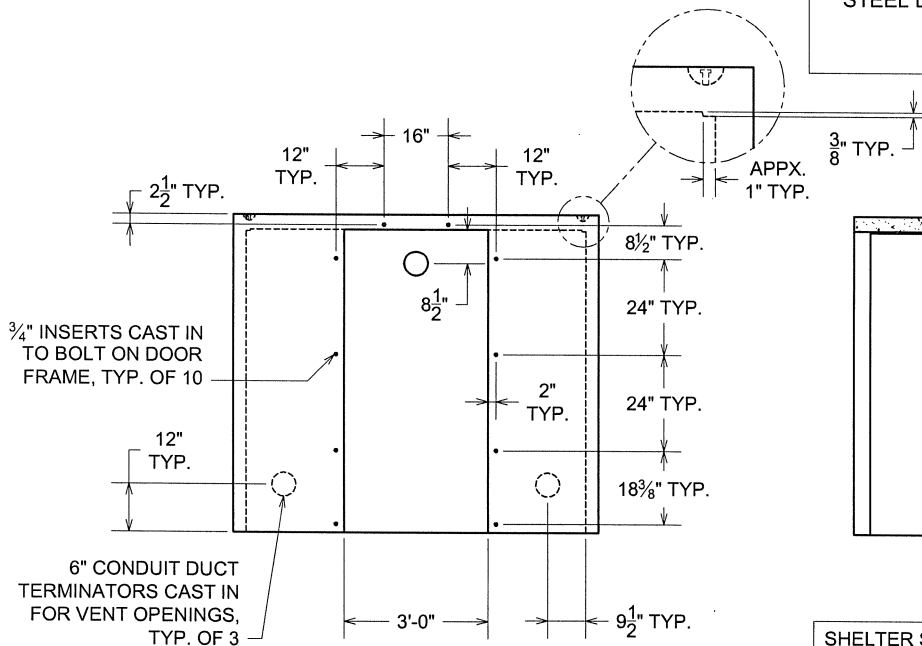
7'-1" (85") WIDE X 7'-1" (85") LONG X 6'-3³/₄" (75³/₄") HIGH INSIDE DIMENSIONS

VCP ITEM #SS-7070-AG



STORM SHELTER ALSO PROVIDED WITH:

- STEEL DOOR CERTIFIED TO MEET NSSA STANDARD (NOT SHOWN)
- STEEL DEFLECTOR PLATES OVER THE 6" DUCT TERMINATORS FOR VENTS (NOT SHOWN)



SHELTER SETS ON TOP OF GROUND,
EPOXIED TO THE PURCHASER'S
CONCRETE SLAB

UNIT WITH DOOR WEIGHS APPROXIMATELY 9,800 LBS.

*ACTUAL DIMENSIONS OF CONCRETE PRODUCTS MAY VARY SLIGHTLY
*PRODUCT & DRAWING SUBJECT TO CHANGE WITHOUT NOTICE

NOTES:

- CONCRETE: 5,000 P.S.I. (MINIMUM)
- REINFORCING: GRADE 60; EQUAL TO #4 REBARS @ 12" O.C.E.W. (MIN.)



DRAWING NOT TO SCALE

SS-7070-AG.DWG
DATE CREATED: 5/07
UPDATED: -----