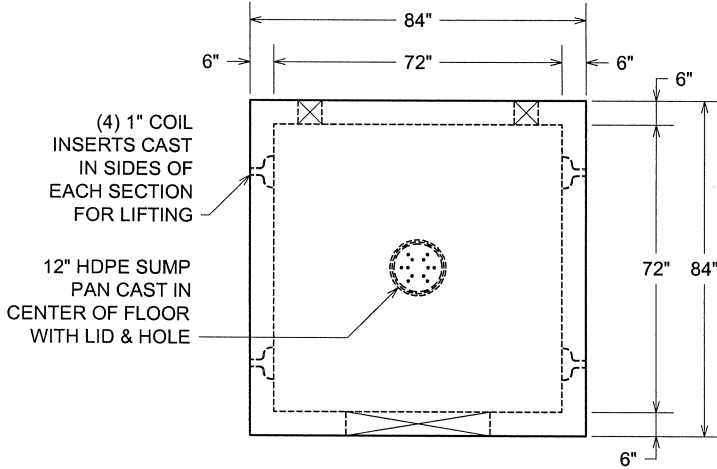


PRECAST CONCRETE ABOVE GROUND (AG)

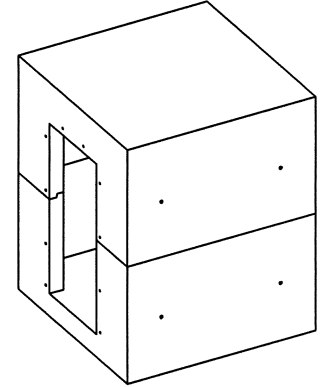
# STORM SHELTER

LOCALLY MANUFACTURED, PRECAST CONCRETE SHELTER WITH STEEL DOOR,  
**BOTH CERTIFIED TO MEET NSSA STANDARD**  
6'-0" (72") WIDE X 6'-0" (72") LONG X 7'-0" (84") HIGH INSIDE DIMENSIONS  
**VCP ITEM #SS-606070-AG**

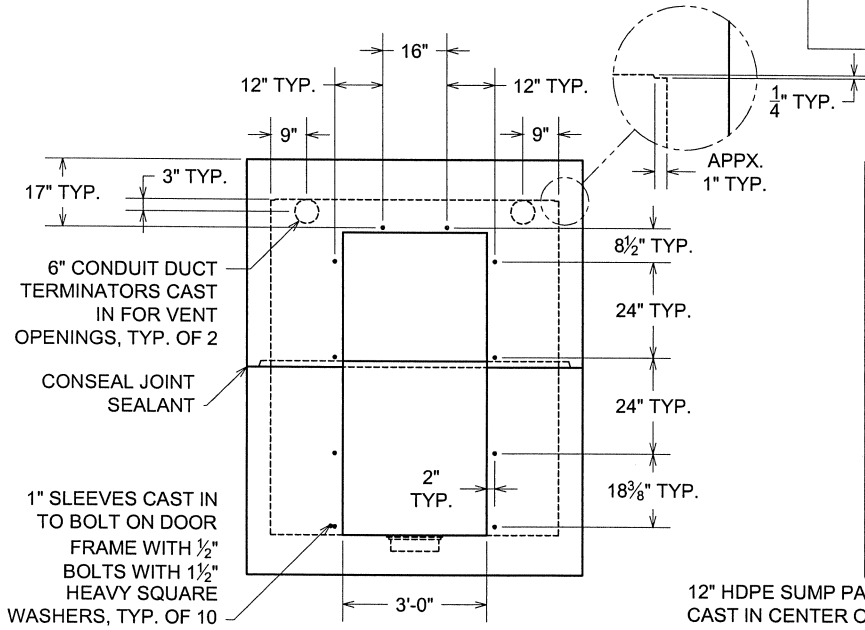


PLAN VIEW

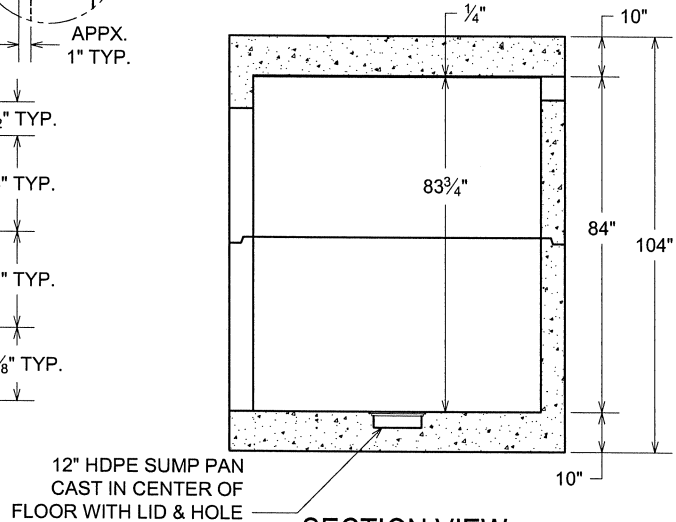
SHELTER SETS ON TOP OF GROUND, NO ANCHORING REQUIRED



STORM SHELTER ALSO PROVIDED WITH:  
STEEL DOOR CERTIFIED TO MEET NSSA STANDARD (NOT SHOWN)  
STEEL DEFLECTOR PLATES OVER THE 6" DUCT TERMINATORS FOR VENTS (NOT SHOWN)



ELEVATION VIEW



SECTION VIEW

UNIT WITH DOOR WEIGHS APPROXIMATELY 24,800 LBS.

\*ACTUAL DIMENSIONS OF CONCRETE PRODUCTS MAY VARY SLIGHTLY  
\*PRODUCT & DRAWING SUBJECT TO CHANGE WITHOUT NOTICE

**NOTES:**  
- CONCRETE: 5,000 P.S.I. (MINIMUM)  
- REINFORCING: GRADE 60; EQUAL TO #4 REBARS @ 12" O.C.E.W. (MIN.)



DRAWING NOT TO SCALE

55-606070-AG.DWG  
DATE CREATED: 5/07  
UPDATED: -----