

PRECAST CONCRETE SAND/OIL INTERCEPTORS

2000 GALLON & LARGER CAPACITIES

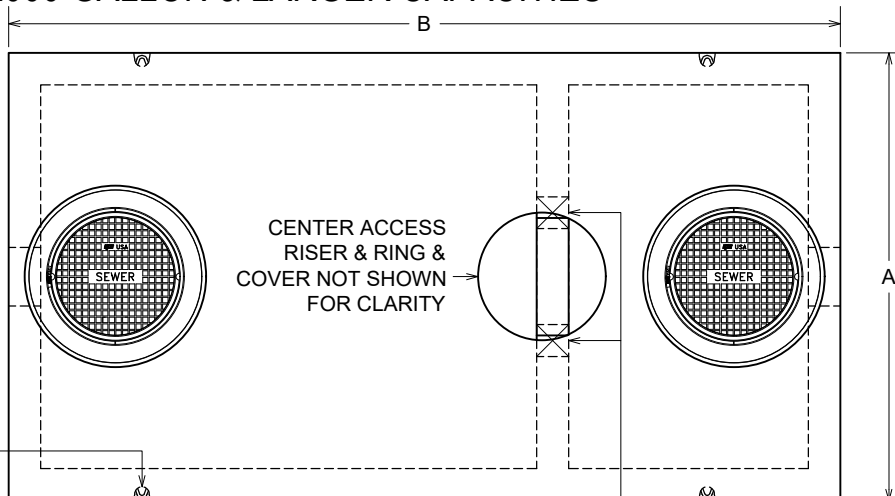
APPROVED BY : _____
DATE : _____

SELECT SIZE:

- 2000 _____
- 2500 _____
- 3000 _____
- 3500 _____
- 4000 _____

PLAN VIEW

IT IS THE EXCAVATOR'S OR INSTALLER'S RESPONSIBILITY TO REQUEST OUR INSTALLATION GUIDELINES PRIOR TO INSTALLING THIS TANK



SECTIONS LIFT FROM 4 RECESSED GALVANIZED LIFT BARS

OPTIONAL 24" ID MANHOLE RISERS AS REQUIRED TO ADJUST RINGS & COVERS TO GRADE, TYP. EACH ACCESS

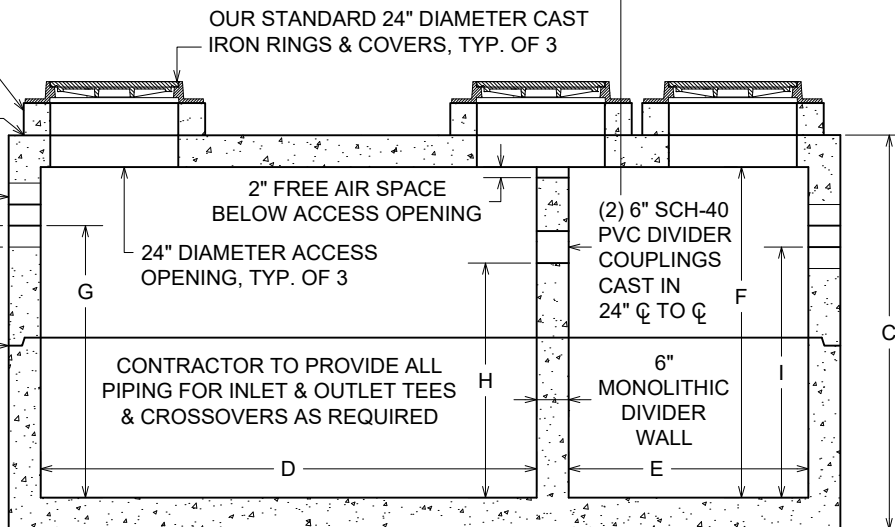
OUR STANDARD 24" DIAMETER CAST IRON RINGS & COVERS, TYP. OF 3

JOINT SEALANT

12" DIAMETER BLOCKOUTS CAST IN INLET & OUTLET END, PRESS-IN GASKETS AVAILABLE FOR 4", 6" OR 8" PIPE

2 ROWS JOINT SEALANT

SECTION VIEW



"G", "H", "I" & "K" DIMENSIONS:
ALL ARE TO THE PIPE INVERT

* "J" DIMENSION:
IS APPROXIMATE HEIGHT FROM BOTTOM OF PRECAST UNIT TO BOTTOM OF 12" HOLE, NOT TO BOTTOM OF THE PIPE INVERT

** "K" DIMENSION:
IS FOR DIGGING INFORMATION ONLY, APPROXIMATE HEIGHT FROM BOTTOM OF PRECAST UNIT TO THE PIPE INVERT, EXCAVATION SHOULD ALLOW 1' ON EACH SIDE OF INTERCEPTOR FOR SLING REMOVAL

FLOOR, WALLS & ROOF ARE 6" THICK

REINFORCED FOR AASHTO HS-20-44 LOADINGS FOR UP TO 4' OF COVER OVER TOP OF INTERCEPTOR CONCRETE: 5000 P.S.I. MINIMUM

LARGER SIZE UNITS UP TO 30,000 GALLONS ARE AVAILABLE - CALL FOR INFORMATION

DRAWING IS NOT TO SCALE

ACTUAL DIMENSIONS OF CONCRETE PRODUCTS MAY VARY SLIGHTLY

SAND/OIL INTERCEPTOR DIMENSIONS					
	2000	2500	3000	3500	4000
A	7'-0"	7'-0"	7'-0"	7'-0"	7'-0"
B	13'-0"	13'-0"	13'-0"	17'-0"	17'-0"
C	74"	86"	98"	87"	96"
D	93"	93"	93"	120"	120"
E	45"	45"	45"	66"	66"
F	62"	74"	86"	75"	84"
G (4" PIPE)	51"	63"	75"	64"	73"
G (6" PIPE)	50"	62"	74"	63"	72"
G (8" PIPE)	49"	61"	73"	62"	71"
H	44"	56"	68"	57"	66"
I (4" PIPE)	47"	59"	71"	60"	69"
*J	53"	65"	77"	66"	75"
DIGGING DEPTH INFORMATION					
**K (4" PIPE)	57"	69"	81"	70"	79"
**K (6" PIPE)	56"	68"	80"	69"	78"
**K (8" PIPE)	55"	67"	79"	68"	77"
TOTAL APPROXIMATE WEIGHTS (IN LBS)					
	31,000	34,000	37,300	42,400	45,200
HEAVIEST PIECE (MAX. WEIGHT) BASED ON EQUAL HEIGHT SECTIONS (IN LBS)					
	15,500	17,000	18,700	21,200	22,600



2000+ GAL 501.DWG
DATE CREATED: 11 / 05
UPDATED: 12 / 21

12650 Tucson Street • Henderson, Colorado 80640 • 303-659-3747, Fax 303-659-1333
2671 South Greeley Hwy • Cheyenne, Wyoming 82007 • 307-634-0695, Fax 307-634-0694
10021 Amarillo Blvd East • Amarillo, Texas 79108 • 806-374-3747, Fax 806-335-3717

www.vaughnconcreteproducts.com