

# PRECAST CONCRETE MUD INTERCEPTOR

1000 GALLON CAPACITY  
WITH LID FOR TRAFFIC

IT IS THE EXCAVATOR'S OR  
INSTALLER'S RESPONSIBILITY  
TO REQUEST OUR  
**INSTALLATION GUIDELINES**  
PRIOR TO INSTALLING THIS  
TANK

## MONOLITHIC BODY NO SEAMS OR JOINTS

3" THICK FLOOR  
4" THICK WALLS  
8" THICK LID FOR TRAFFIC

2 COMPARTMENT TANK WITH  
APPROXIMATELY 60% OF CAPACITY ON  
INLET SIDE

TANK IS PROVIDED WITH NOTCHES IN  
SIDEWALLS FOR SLIP-IN DIVIDER WALL

WITHSTANDS UP TO 6' OF BURY, RISERS  
ARE AVAILABLE FOR INLET & OUTLET

### OPTIONS:

- ADDITIONAL 3'X3' I.D. RISER HEIGHT
- 24" I.D. MANHOLE RISERS
- SEALANT FOR RISERS

APPROVED BY: \_\_\_\_\_

DATE: \_\_\_\_\_

OUR STANDARD 3'x3' CAST IRON  
FRAME & GRATE  
(OPEN FLOW AREA OF GRATE IS 750  
SQ. INCHES OR 5.21 SQ. FEET)

3'x3' I.D. CAST-IN-PLACE COLLAR AS  
REQUIRED TO ACHIEVE GRADE; OR  
PRECAST COLLAR (RISER) IS  
AVAILABLE AS A SPECIAL ORDER ITEM

OPTIONAL CONSEAL JOINT SEALANT, OR  
CONTRACTOR TO GROUT

PIPING BLOCKOUTS WITH POLYLOK  
PIPE SEALS CAST IN TANK FOR INLET  
& OUTLET PIPING (TYPICAL)

CONTRACTOR'S 4" PIPES

**CONTRACTOR SUPPLIED**  
4" SDR35 INLET & OUTLET TEES

### TANK WEIGHTS:

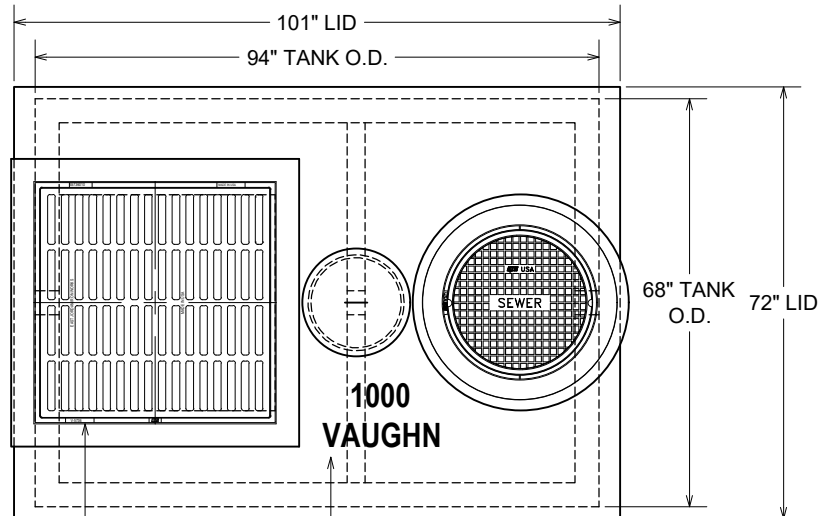
- TANK LID : 4,000 LBS.
- TANK WITH DIVIDER ONLY : 8,000 LBS.
- COMPLETE INTERCEPTOR : 12,000 LBS.

### DIGGING SPECIFICATIONS:

- 54" BELOW THE INLET
- EXCAVATION: 7'-0" WIDE X 10'-0" LONG
- SEE OUR **INSTALLATION GUIDELINES**  
PRIOR TO INSTALLING THIS TANK

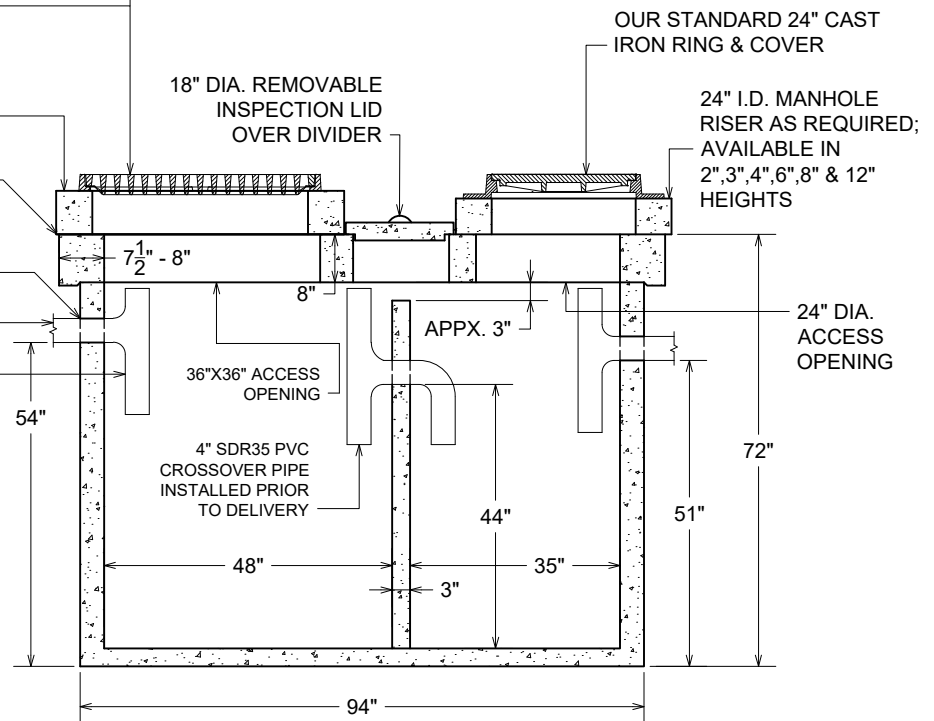
CONCRETE : 4,000 P.S.I. (MINIMUM)  
REINFORCING : REBAR & WELDED WIRE FABRIC

ACTUAL DIMENSIONS OF CONCRETE PRODUCTS MAY VARY SLIGHTLY



PLAN VIEW

DURING PRODUCTION, "TANK SIZE" &  
"VAUGHN" ARE STAMPED IN LID, "IN" &  
"OUT" ARE MARKED ON TANK ENDS



SECTION VIEW

OUR STANDARD 24" CAST IRON  
RING & COVER

24" I.D. MANHOLE  
RISER AS REQUIRED;  
AVAILABLE IN  
2", 3", 4", 6", 8" & 12"  
HEIGHTS

24" DIA.  
ACCESS  
OPENING

DRAWING IS NOT TO SCALE

**vaughn**  
**concrete products, inc.**

1000 GAL. MI. TRAFFIC.DWG  
DATE CREATED: 12/ 08  
UPDATED: 8/ 2021

12650 Tucson Street • Henderson, Colorado 80640 • 303-659-3747, Fax 303-659-1333  
2671 South Greeley Hwy • Cheyenne, Wyoming 82007 • 307-634-0695, Fax 307-634-0694  
10021 Amarillo Blvd East • Amarillo, Texas 79108 • 806-374-3747, Fax 806-335-3717