

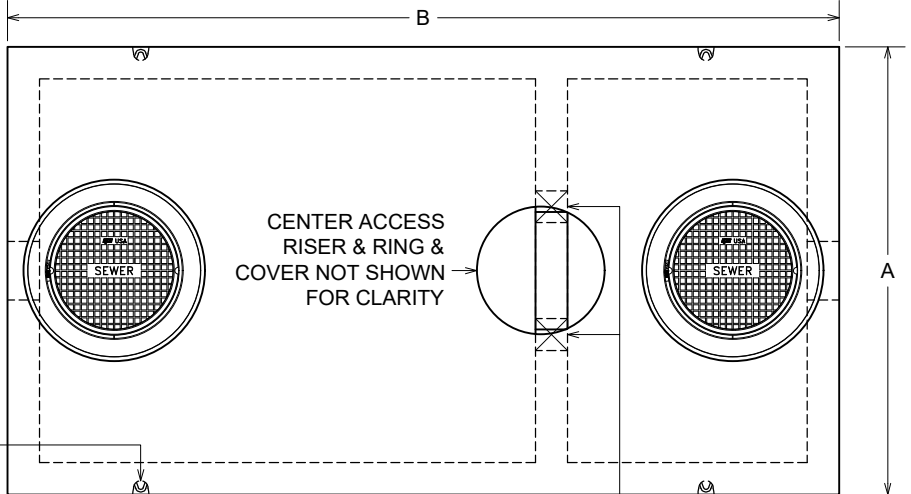
# PRECAST CONCRETE GREASE INTERCEPTORS

## 2000 GALLON & LARGER CAPACITIES

APPROVED BY : \_\_\_\_\_  
DATE : \_\_\_\_\_

SELECT SIZE:  
2000 \_\_\_\_\_  
2500 \_\_\_\_\_  
3000 \_\_\_\_\_  
3500 \_\_\_\_\_  
4000 \_\_\_\_\_

### PLAN VIEW



IT IS THE EXCAVATOR'S OR INSTALLER'S RESPONSIBILITY TO REQUEST OUR **INSTALLATION GUIDELINES** PRIOR TO INSTALLING THIS TANK

SECTIONS LIFT FROM 4 RECESSED GALVANIZED LIFT BARS

OPTIONAL 24" ID MANHOLE RISERS AS REQUIRED TO ADJUST RINGS & COVERS TO GRADE, TYP. EACH ACCESS

OUR STANDARD 24" DIAMETER CAST IRON RINGS & COVERS, TYP. OF 3

JOINT SEALANT

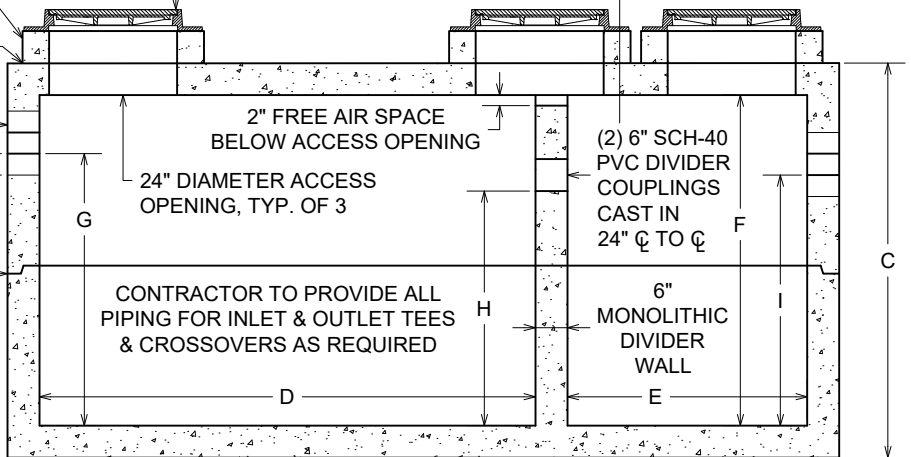
12" DIAMETER BLOCKOUTS CAST IN INLET & OUTLET END, PRESS-IN GASKETS AVAILABLE FOR 4", 6" OR 8" PIPE

2" FREE AIR SPACE BELOW ACCESS OPENING  
24" DIAMETER ACCESS OPENING, TYP. OF 3

(2) 6" SCH-40 PVC DIVIDER COUPLINGS CAST IN 24"  $\phi$  TO  $\phi$

2 ROWS JOINT SEALANT

### SECTION VIEW



CONTRACTOR TO PROVIDE ALL PIPING FOR INLET & OUTLET TEES & CROSSOVERS AS REQUIRED

6" MONOLITHIC DIVIDER WALL

"G", "H", "I" & "K" DIMENSIONS: ALL ARE TO THE PIPE INVERT

\* "J" DIMENSION: IS APPROXIMATE HEIGHT FROM BOTTOM OF PRECAST UNIT TO BOTTOM OF 12" HOLE, NOT TO BOTTOM OF THE PIPE INVERT

\*\* "K" DIMENSION: IS FOR DIGGING INFORMATION ONLY, APPROXIMATE HEIGHT FROM BOTTOM OF PRECAST UNIT TO THE PIPE INVERT, EXCAVATION SHOULD ALLOW 1' ON EACH SIDE OF INTERCEPTOR FOR SLING REMOVAL

FLOOR, WALLS & ROOF ARE 6" THICK

REINFORCED FOR AASHTO HS-20-44 LOADINGS FOR UP TO 4' OF COVER OVER TOP OF INTERCEPTOR CONCRETE: 5000 P.S.I. MINIMUM

LARGER SIZE UNITS UP TO 30,000 GALLONS ARE AVAILABLE - CALL FOR INFORMATION

DRAWING IS NOT TO SCALE

ACTUAL DIMENSIONS OF CONCRETE PRODUCTS MAY VARY SLIGHTLY

#### GREASE INTERCEPTOR DIMENSIONS

	2000	2500	3000	3500	4000
A	7'-0"	7'-0"	7'-0"	7'-0"	7'-0"
B	13'-0"	13'-0"	13'-0"	17'-0"	17'-0"
C	74"	86"	98"	87"	96"
D	93"	93"	93"	120"	120"
E	45"	45"	45"	66"	66"
F	62"	74"	86"	75"	84"
G (4" PIPE)	51"	63"	75"	64"	73"
G (6" PIPE)	50"	62"	74"	63"	72"
G (8" PIPE)	49"	61"	73"	62"	71"
H	44"	56"	68"	57"	66"
I (4" PIPE)	47"	59"	71"	60"	69"
*J	53"	65"	77"	66"	75"
<b>DIGGING DEPTH INFORMATION</b>					
**K (4" PIPE)	57"	69"	81"	70"	79"
**K (6" PIPE)	56"	68"	80"	69"	78"
**K (8" PIPE)	55"	67"	79"	68"	77"
<b>TOTAL APPROXIMATE WEIGHTS (IN LBS)</b>					
	31,000	34,000	37,400	42,400	45,200
<b>HEAVIEST PIECE (MAX. WEIGHT) BASED ON EQUAL HEIGHT SECTIONS (IN LBS)</b>					
	15,500	17,000	18,700	21,200	22,600

# vaughn concrete products, inc.

2000+ GAL. DRAWING  
DATE CREATED: 11/05  
UPDATED: 12/21

12650 Tucson Street • Henderson, Colorado 80640 • 303-659-3747, Fax 303-659-1333  
2671 South Greeley Hwy • Cheyenne, Wyoming 82007 • 307-634-0695, Fax 307-634-0694  
10021 Amarillo Blvd East • Amarillo, Texas 79108 • 806-374-3747, Fax 806-335-3717

[www.vaughnconcreteproducts.com](http://www.vaughnconcreteproducts.com)