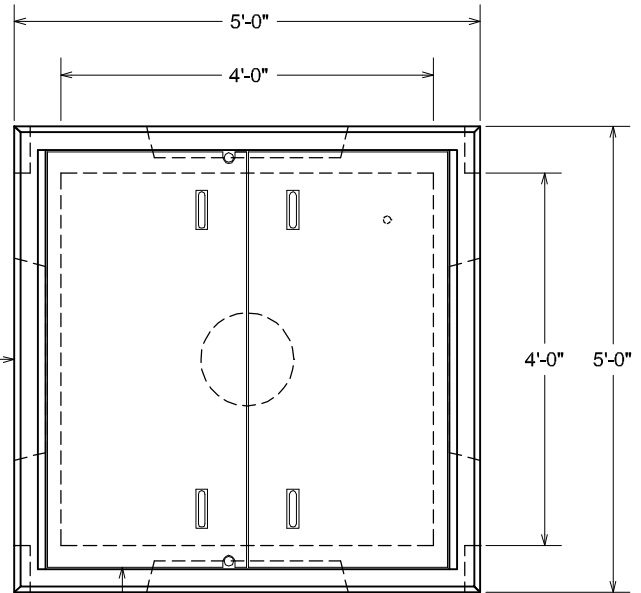
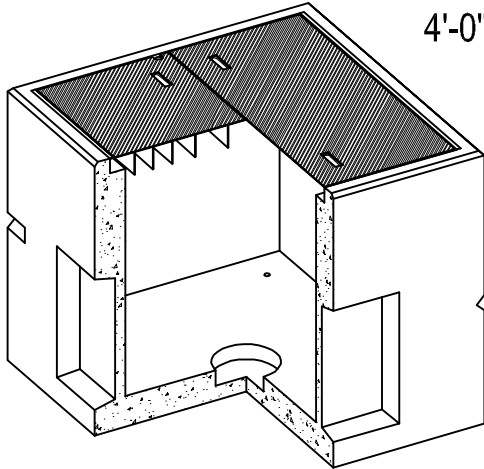


PRECAST CONCRETE SPLICE BOX

4'-0" WIDE X 4'-0" LONG X 4'-0" HIGH INSIDE DIMENSIONS

VCP ITEM #SB404040



PLAN VIEW

24"x24"x4" DEEP CONDUIT KNOCKOUTS AT FLOOR LEVEL, CENTERED IN WIDTH OF EACH WALL, TYP. OF 4

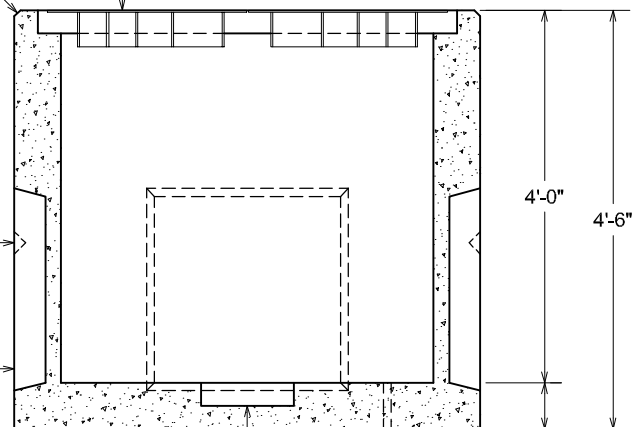
GALVANIZED STEEL FRAME WITH HINGED 1/4" STEEL DIAMOND PLATE COVERS WITH DROP HANDLES SUITABLE FOR OCCASIONAL H-20 LOADINGS (NOT DESIGNED FOR HIGH DENSITY TRAFFIC) SPRING ASSISTED COVER WITH STAND, COVERS BOLT CLOSED WITH TWO 1/2" BOLTS

ENTIRE TOP PERIMETER EDGE IS CHAMFERED

PROVIDED WITH LIFT NOTCHES FOR HANDLING, TYP. OF 4

SECTION VIEW

24"x24"x4" DEEP CONDUIT KNOCKOUTS AT FLOOR LEVEL, CENTERED IN WIDTH OF EACH WALL, TYP. OF 4



12" DIAMETER X 3" DEEP SUMP RECESS IN CENTER OF FLOOR

1" PVC SLEEVE CAST IN FOR GROUND ROD, 6" OFF EACH INSIDE WALL OF VAULT

NOTES:

- CONCRETE: 4000 P.S.I. MINIMUM
- REINFORCING: GRADE 60 MINIMUM
- WALLS & FLOOR TO BE 6" THICK
- SUITABLE FOR OCCASIONAL AASHTO HS-20-44 LOADINGS WHEN PLACED ON MATERIAL CAPABLE OF SUPPORTING THE LOADINGS

UNIT WEIGHS APPROXIMATELY 6,700 LBS.

ACTUAL DIMENSIONS OF CONCRETE PRODUCTS MAY VARY SLIGHTLY

DRAWING NOT TO SCALE

4X4X4 SPLICE BOX, DWG
DATE CREATED: 11/04
UPDATED: 12/08



12650 Tucson Street • Henderson, Colorado 80640 • 303-659-3747, Fax 303-659-1333
 2671 South Greeley Hwy • Cheyenne, Wyoming 82007 • 307-634-0695, Fax 307-634-0694
 10021 Amarillo Blvd East • Amarillo, Texas 79108 • 806-374-3747, Fax 806-335-3717