

PRECAST CONCRETE ABOVE GROUND (AG) STAND-ALONE COMMUNITY

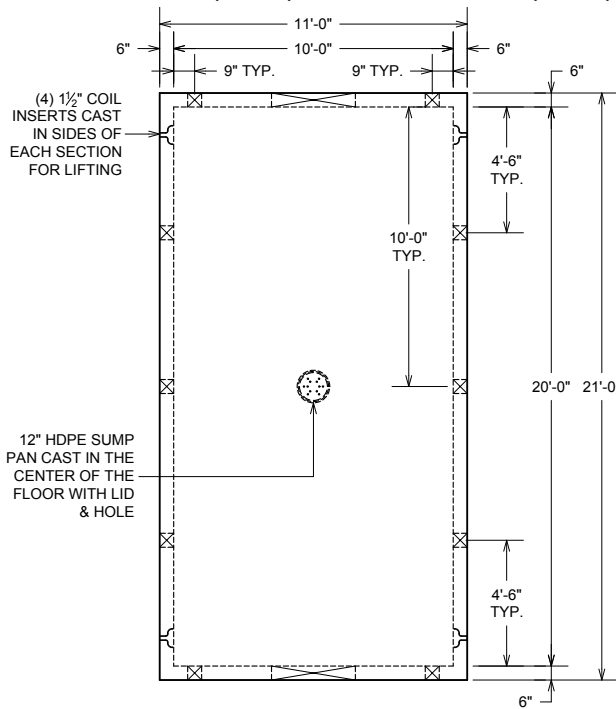
STORM SHELTER

PRECAST CONCRETE SHELTER WITH TWO STEEL DOORS,
CERTIFIED TO MEET ALL NSSA/ICC STANDARDS

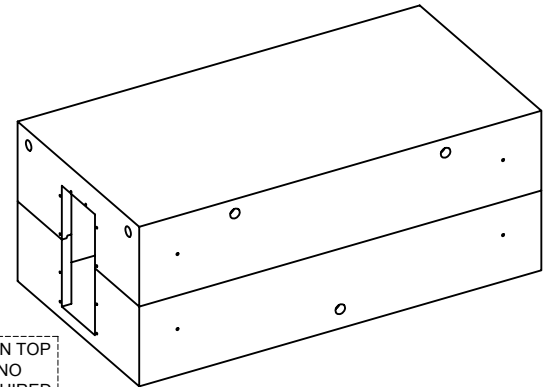
10'-0" (120") WIDE X 20'-0" (240") LONG X 7'-0" (84") HIGH INSIDE DIMENSIONS

VCP ITEM #SS-10020070-AG (34 PERSON*)

*THE NSSA/ICC STANDARDS FOR COMMUNITY TORNADO SHELTERS REQUIRE
 5 SQUARE FEET OF USABLE FLOOR AREA/OCCUPANT



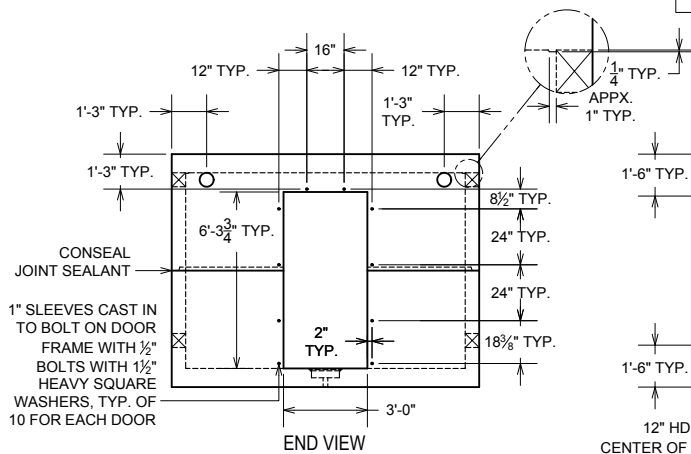
PLAN VIEW



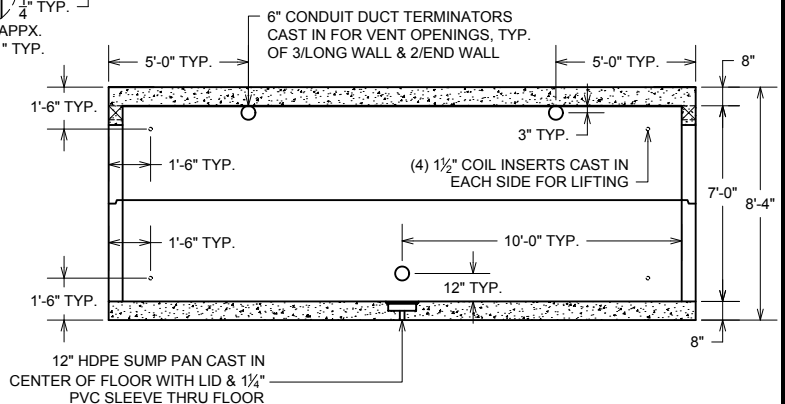
SHELTER SETS ON TOP
 OF GROUND, NO
 ANCHORING REQUIRED

STORM SHELTER ALSO PROVIDED WITH THE FOLLOWING ITEMS:

- (2) STEEL DOORS CERTIFIED TO MEET NSSA STANDARD
- STEEL DEFLECTOR PLATES OVER THE (10) 6" DUCT TERMINATORS FOR VENTS
- (1) PORTABLE TOILET WITH PRIVACY SCREEN
- (4) FLASHLIGHTS FOR EMERGENCY LIGHTING
- DECAL ON 1 DOOR WITH OUR COMPANY NAME, STORM TYPE, DESIGN WIND SPEED AND THE CAPACITY OF THE SHELTER
- HAZARD RECOGNITION LETTERS MOUNTED TO INSIDE WALL OF SHELTER ADJACENT TO EACH DOOR



END VIEW



SECTION VIEW

UNIT WITH DOORS WEIGHS APPROXIMATELY 77,000 LBS.
 TOP HALF OF SHELTER WEIGHS APPX. 38,500 LBS.
 BOTTOM HALF OF SHELTER WEIGHS APPX. 38,000 LBS.

*ACTUAL DIMENSIONS OF CONCRETE PRODUCTS MAY VARY SLIGHTLY
 *PRODUCT & DRAWING SUBJECT TO CHANGE WITHOUT NOTICE

NOTES:

- CONCRETE: 5,000 P.S.I. (MINIMUM)
- REINFORCING: GRADE 60; EQUAL TO #4 REBARS @ 12" O.C.E.W. (MIN.)

DRAWING NOT TO SCALE

55-10020070-AG.DWG
 DATE CREATED: 12/09
 UPDATED: 7/2013

vaughn concrete products, inc.

12650 Tucson Street • Henderson, Colorado 80640 • 303-659-3747, Fax 303-659-1333
 2671 South Greeley Hwy • Cheyenne, Wyoming 82007 • 307-634-0695, Fax 307-634-0694
 10021 Amarillo Blvd East • Amarillo, Texas 79108 • 806-374-3747, Fax 806-335-3717

www.vaughnconcreteproducts.com